

# THE COMPANY PROFILE



**Walmart Engineering and  
Automation System Ltd .**



# HI THERE!


At Walmart Engineering and Automation System Limited, we're not just a company; we're a commitment to excellence. Our dedication to providing exceptional services in engineering and automation, from design to construction and beyond, sets us apart. We bring a unique blend of creativity, tradition, and unwavering commitment to creating inviting and economically sound environments.

**Walmart Engineering and Automation System Ltd .**

# TABLE OF CONTENTS



<b>About Company</b>	<b>4</b>
<b>CEO Message</b>	<b>5</b>
<b>Our Mission and Vision</b>	<b>6</b>
<b>Our Core Value</b>	<b>7</b>
<b>How we Work</b>	<b>8</b>
<b>Our Service</b>	<b>9</b>
<b>Our Project</b>	<b>13</b>
<b>Meet Our Team</b>	<b>14</b>
<b>Our Partners</b>	<b>15</b>
<b>Our Client</b>	<b>16</b>
<b>Contact Us</b>	<b>17</b>

The image shows a large wind turbine on the left side, with its three blades extending towards the top left. In the foreground and middle ground, there is a complex electrical substation with various metal structures, insulators, and power lines. The sky is blue with scattered white clouds. The text 'ABOUT COMPANY' is overlaid in red on the left side of the image.

# ABOUT COMPANY

Walmart Engineering and Automation System Limited is a dynamic and innovative company specializing in providing comprehensive solutions in engineering, automation, and project management. Our unique services encompass design, construction, and the sale of engineering and automation-related goods. Our strength lies in our unwavering passion for creativity and tradition-inspired designs. We take great pride in planning and designing environments that offer attractive, economic, and welcoming solutions while ensuring the satisfaction of our clients, staff, and customers.



# CEO MESSAGE



It is with immense pride and enthusiasm that I welcome you to Walmat Engineering and Automation System Limited, a company driven by innovation, excellence, and a resolute commitment to delivering comprehensive solutions in engineering, automation, and project management.

At Walmat, we are not just in the business of design, construction, and the sale of engineering and automation-related goods. We are in the business of transforming ideas into realities, spaces into experiences, and challenges into opportunities. We embrace every project with an unwavering passion for creativity and a deep respect for tradition-inspired designs.

Our strength lies in our ability to envision environments that are not only attractive but also economically sound and inherently welcoming. We believe that every space, every project, should resonate with purpose and potential, and it's our mission to bring these visions to life



## **OUR MISSION**

**Our mission is to design, build, and provide asset management solutions within environments where people feel safe, valued, and inspired. Safety, satisfaction, and excellence are at the core of our mission.**

## **OUR VISSION**

**We aspire to be a diverse, family-owned business that is revered in the industry. Our vision is to grow into the most respected company in design, construction, and asset management. We seek to redefine excellence and raise industry standards through our unwavering commitment to quality and innovation.**



# OUR CORE VALUE

At Walmart Engineering and Automation System Limited, our operations are guided by a set of core values:

**Honesty:** We uphold the highest standards of honesty in all our dealings

**Integrity:** Our integrity is unwavering, and it is the cornerstone of our operations.

**Honesty:** We uphold the highest standards of honesty in all our dealings

**Respect:** We treat our clients, staff, and partners with respect and professionalism.

**Innovation:** We thrive on innovation and continuous improvement

**Fairness:** Fairness is integral to our business ethics.

**Timely Delivery:** We are committed to delivering our projects on time, every time.

# HOW WE WORK

1

## **Transforming Ideas into Realities:**

We don't merely execute projects; we transform ideas into tangible realities. Every concept is an opportunity, and we embrace it with an unwavering passion for creativity. This process involves the infusion of tradition-inspired designs, creating spaces that resonate with purpose and potential.

2

## **Delivering High-Quality, Innovative, and Practical Solutions:**

Our competitive advantages are founded on our drive to deliver high-quality, innovative, and practical solutions. Regardless of project size or complexity, we rise to the challenge. Our exceptional team of highly experienced professionals shares a common commitment to excellence, and our culture is one of providing tailor-made solutions that meet your unique needs.

3

## **Guided by Core Values:**

As we navigate our journey, our core values of honesty, integrity, respect, fairness, innovation, and timely delivery remain the guiding principles in every action we take. Our dedication to constant challenge and perfection drives our pursuit of becoming one of the industry's best-integrated design and project management firms.





# OUR SERVICE

## 1. MEP Design and Systems:

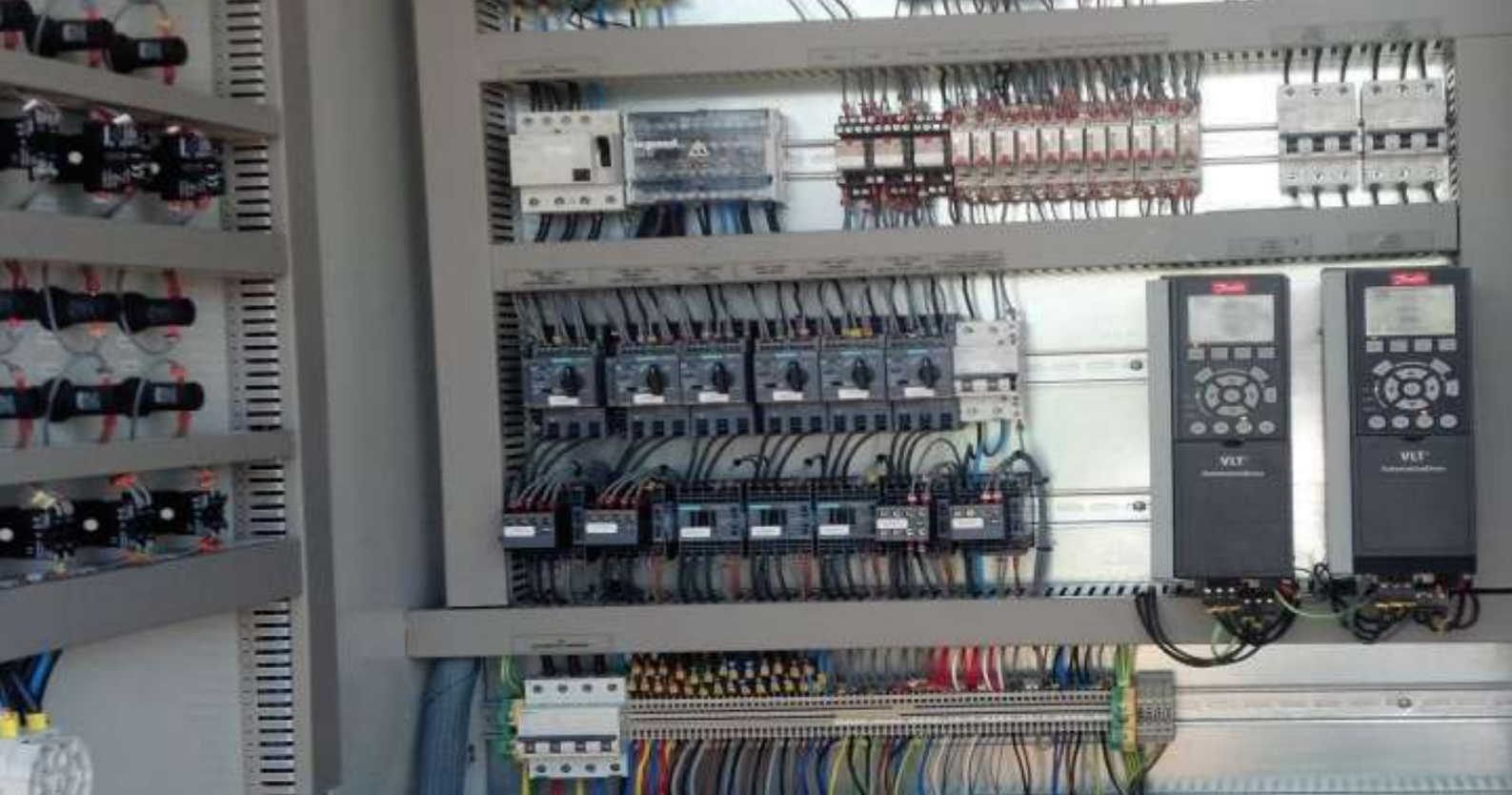
We specialize in creating efficient and integrated Mechanical, Electrical, and Plumbing (MEP) systems. This includes designing and implementing the systems that control heating, cooling, lighting, and more within buildings.

## 2. Architecture Design:

Our architectural design services involve crafting the blueprints and layouts for buildings, ensuring they are functional, aesthetically pleasing, and aligned with your vision.

## 3. Engineering System Integrations and Installation:

We excel in seamlessly integrating various engineering systems within your projects. This includes setting up the complex networks that ensure different systems work together flawlessly, as well as handling their installation.



# OUR SERVICE

## 4. Civil Engineering:

Our civil engineering expertise covers the planning and execution of infrastructure projects, such as roads, bridges, and utilities. We ensure that everything is designed and built to last.

## 5. Electrical Systems:

We handle electrical systems that power your facilities, including lighting, power distribution, and control systems, to keep your operations running smoothly.

## 6. Mechanical Systems:

This involves the design and installation of machinery and equipment for your projects, such as HVAC systems for climate control.

## 7. Pressurized Systems:

We specialize in creating and maintaining systems that handle liquids or gases under pressure, ensuring they function reliably and safely.



# OUR SERVICE

## 8. Oil and Gas MEP Systems:

For the oil and gas industry, we provide specialized MEP systems that cater to the unique needs of this sector, including heating, cooling, and safety systems.

## 9. STS Pipeline Heating:

We offer innovative solutions to heat and maintain the integrity of pipelines, ensuring they function optimally, especially in cold climates.

## 10. Pipeline Alignment and Grading:

We ensure pipelines are precisely aligned and graded, preventing issues like leaks and ensuring efficient flow.

## 11. Specialized Welding and Fabrication:

Our expertise extends to specialized welding and fabrication, producing high-quality, custom metal components for various applications.

## 12. Control and Monitoring Centers:

We create centralized control and monitoring hubs to oversee and manage systems across your projects efficiently.





# OUR SERVICE

## 13. Pump Stations:

We design, build, and maintain pump stations that transport liquids efficiently, ensuring a reliable supply.

## 14. Power Stations:

Our services cover the planning, design, and construction of power stations, ensuring a stable electricity supply.

## 15. Testing and Commissioning:

We rigorously test and commission systems to guarantee they function optimally and meet safety standards.

# OUR PROJECT



Our strength lies in our ability to envision environments that are not only attractive but also economically sound and inherently welcoming. We believe that every space, every project, should resonate with purpose and potential, and it's our mission to bring these visions to life. Our commitment to groundbreaking ventures, exemplified by two key initiatives.

## **Msata solar project 650MW**

Walmart Engineering and Automation System Limited is proud to spearhead the groundbreaking Msata Solar Project, a monumental initiative aimed at generating 650 megawatts of clean, renewable solar energy.

This visionary project signifies a significant leap forward in addressing energy needs sustainably. Located in Msata, the project harnesses the abundant solar potential of the region to provide a substantial source of electricity.

## **Solar Substation 32MW**

Walmart Engineering and Automation System Limited is at the forefront of delivering the Solar Substation 32MW project, a pivotal initiative that brings sustainable energy solutions to life. This project involves the design, construction, and integration of a state-of-the-art substation to support a 32-megawatt solar energy installation.







# MEET OUR TEAM

Our team is a dedicated assembly of professionals, each contributing their expertise to ensure our projects meet and exceed industry standards. From our experienced engineers and designers to our meticulous project managers and innovative problem solvers, we work cohesively to transform your ideas into reality. With a shared commitment to quality and innovation, our team is the driving force behind our success.

- Anna Ringo - FINANCE AND ACCOUTING
- Florance Fredrick - IT
- Happyglory Urassa - BUSINESS DEVELOPMENT
- Mathias H. John - HUMAN RESOURCE
- Bright Mziray - MARKERTING
- Mariam Daudi - ADMINISTRATION

# OUR PARTNERS

**ROTAREX**



**DEEP SEA ELECTRONICS SCHNEIDER - GERMANY**



**C&S ELECTRICS -INDIA**



**ABB- ITALY SIEMENS - GERMANY**



**DANFOS- GERMANY**



**GROUNDFOSS PUMPS**



# OUR CLIENT

At Walmat Engineering and Automation System Limited, we take immense pride in our enduring commitment to delivering high-quality services with the utmost integrity. Our client relationships are a true reflection of our dedication to excellence.

This is some of our client :

- **COMFORT HOTELS**
- **CITY COOL ENGINEERS LTD**
- **JACE ENGINEERING LTD**
- **HYDRO-CARBON AFRICA**
- **WATERWAYS AFRICA**
- **LADDER ELECTRONICS LTD**
- **MULAGO HOSPITAL**
- **BROADWAY TECHNICALS LTD.**
- **HALALI INVESTMENTS LTD.**
- **St.MARY'S COLLEGE KISUBI**
- **ALDUS PUMPS SERVICES**
- **SHELFIELD (U) LTD**
- **MEGHA INDUSTRIES**
- **KAKIRA SUGAR WORKS**



# Contact Us

We are excited about the possibilities and opportunities that Walmart offers. We invite you to join us on this remarkable journey towards excellence, innovation, and a future where both our team and our clients feel safe, valued, and inspired.

For inquiries, collaboration, or to learn more about how we can serve your needs, please contact us at

## PHONE

[+255 694 800 285](tel:+255694800285)

## MAIL

[info@walmart.com](mailto:info@walmart.com)

## SITE

<https://walmart.africa>

## ADDRESS

[Mbezi beach, changu street](#)

[Dar es salaam, Tanzania](#)